



EMEA

# Johannesburg 1 Data Center

## Complete solutions for your network systems

**Johannesburg** is the heart of the **African digital economy**. Our campus will offer **highly available**, scalable data center space with high power density, **carrier neutrality**, cloud network access and **on-site support**.

### Data center space

- 3,000m<sup>2</sup> of IT space after completion of phase 1
- 6,000m<sup>2</sup> of IT space once fully built out
- Flexible colocation deployments
- Ancillary spaces available

### Power

- Total power: 20MVA
- IT load DC1: 6MW
- IT load: 12MW once fully built out
- Average power density of 2.0kW/m<sup>2</sup>
- Power supply at 20kV level
- All IT racks supplied with two separate UPS systems (A- and B-supply) with N+1 redundancy
- Redundantly designed emergency power system with diesel generators N+1

### Cooling

- Chilled water data suite cooling with air-cooled free-cooling chiller systems with a minimum of N+1 redundancy
- Concurrently maintainable air handling units (AHUs) providing fresh air pressurization and humidity control to data suites
- Chilled water cooling to MMR and to electrical plant rooms (N+1)
- Pressure relief and cold smoke extract system to all suppressed areas

### Fire protection

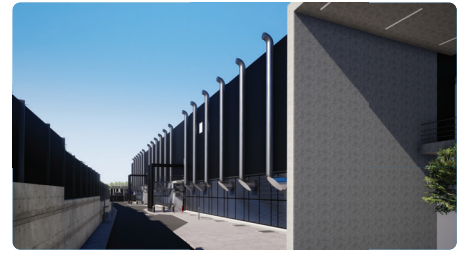
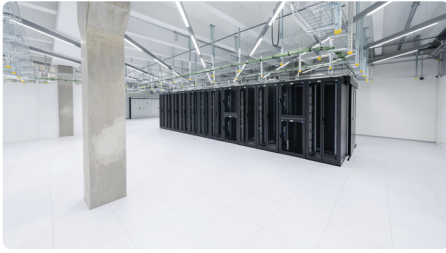
- Very Early Smoke Detection Alarm Systems (VESDA)
- Pre-action dry-pipe multi-range nitrogen gas extinguishing system
- Fire protection walls to a minimum of 60 minutes separation
- Monitoring with automatic digital fire alarm system

### Security

- 24/7 Security Operations Center and remote Service Control Center
- Site perimeter fence with extended post to 3,000mm accommodating an electric fence
- Card swipe entry/exit to all doors
- Preventive risk assessment

### Connectivity

- Carrier- and cloud-neutral
- Carrier-mix
- Connectivity and dark fiber infrastructure
- Carrier-Meet-Me-Rooms
- Redundant cabling infrastructure
- Pre-Cabling
- High-performance internet access
- Inter data center connectivity between our data centers
- Multi Services Interconnection Platform



### Additional services

- Client implementation
- Installation services
- Remote Hands services
- Facility services
- Audit support

### Certifications (planned)

- ISO 9001
- ISO 27001
- PCI DSS

### Global data center network

- Part of the NTT family
- Connectivity options to our global network

### Service level agreement

- 99.999% power uptime availability
- Climate control conditions in line with ASHRAE guidelines
- Connectivity availability

### Address and contact

#### Johannesburg 1 Data Center

NTT Global Data Centers EMEA Pty Ltd.  
21 Sterling Road  
Samrand, Centurion, 0187, Gauteng  
South Africa

**T: +49 69 78 01-21 90**

**E: dc.emea.sales@global.ntt**

### Location

