



EMEA

Hemel Hempstead 2 Data Center

Flexible capabilities for flexible requirements

Hemel Hempstead 2 Data Center is a **fiber-connected campus** and fully integrated with our other data center facilities allowing clients to grow. It has **the optimal distance to the Slough data centers and the London 1 Data Center in Dagenham** for back-up.

Data center space

- 2.200+m² of IT space
- Flexible colocation deployments
- Ancillary spaces available

Power

- IT load: 5.8MW
- Dual dedicated 11,000V (HV) grid connections (2N)
- Dedicated 2N redundant HV substations on-site
- Minimum 2N (UPS) with battery back-up
- 2N back-up generators
- Refuelling contracts to ensure timely replacement

Cooling

- Primary cooling infrastructure, centrally managed and linked to BMS
- Room air conditioning units
- Regulated humidity
- 1.5m clear false ceiling void for hot-air return to air handling units (AHU)
- Contained hot aisle or chimney rack design

Fire protection

- Physical fire protection in hosting suites and in all plant areas
- Very Early Smoke Detection Alarm Systems (VESDA)
- Gas suppression systems to technical areas
- Fire detection and suppression systems interconnected to central BMS
- Legal requirement

Security

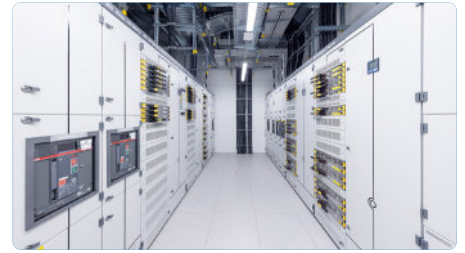
- 24/7 on-site security
- 3.6 meter SEAP certified security fence
- Secure crash-rated vehicle trap access to loading area
- PAS68 certified anti ram-raid barriers throughout site perimeter
- Blast proof and anti-intruder shielded external windows
- Steel security doors
- External and internal IP CCTV system
- Proximity cards to authorize access levels including man trap access
- Biometric identification

Connectivity

- Carrier- and cloud-neutral
- Carrier-mix
- Connectivity and dark fiber infrastructure
- Carrier-Meet-Me-Rooms
- Redundant cabling infrastructure
- Pre-Cabling to support fast Cross Connect deployments
- High-performance internet access
- Inter data center connectivity between our data centers
- Multi Service Interconnection Platform

Additional services

- Client implementation
- Installation services
- 24/7 Remote Hands services
- Facility services
- Audit support



Certifications

- ISO 9001
- ISO 27001
- ISO 14001
- PCI DSS

Global data center network

- Part of the NTT family
- Connectivity options to our global network

Service level agreement

- 99.999% power uptime availability
- Climate control conditions in line with ASHRAE guidelines
- Connectivity availability

Address and contact

Hemel Hempstead 2 Data Center

NTT Global Data Centers EMEA UK Ltd.
150 Maylands Avenue
Hemel Hempstead, HP2 7DF
United Kingdom

T: +44 20 8016-9118

E: dc.emea.sales@global.ntt

Locations

