



NTT

EMEA

Frankfurt 4 Data Center

High availability in secure space

Frankfurt, the world-class financial and service center and local point for the dynamic Frankfurt-Rhine-Main economic region, is one of Europe's leading locations for companies.

Data center space

- 14,200+m² of IT space (28,400+m² once fully built out)
- Flexible colocation deployments
- Ancillary spaces available

Power

- Total power: 90MVA
- 34.4MW of IT load (70.4MW once fully built out)
- Average power density of 2.5kW/m²
- Power supply at 110/20kV level
- Own substation with three 110/20kV transformers N+1
- Two separate UPS systems (A- and B-supply) with 2N redundancy
- Redundantly designed emergency power systems with diesel generators N+1

Cooling

- High efficient chiller systems with free-cooling integrated or separated coolers
- CRAH units in the suites and technical rooms

- Concurrently maintainable air handling units (AHUs)
- Cold aisle containment
- Heat recovery with heating pumps

Fire protection

- Very Early Smoke Detection Alarm Systems (VESDA)
- Firefighting system based on a nitrogen extinguishing gas system
- Fire protection walls to a minimum of 90 minutes separation
- Monitoring with automatic digital fire alarm system

Security

- 24/7 Security Operations Center and Operation Control Center
- Palisade fencing
- Video surveillance systems for the external perimeter, plant areas, and data halls
- Ram-raid bollard protection in accordance to BS PAS 68:2013
- Card swipe entry/exit to all doors
- Preventive risk assessment

Connectivity

- Carrier- and cloud-neutral
- Carrier-Access-Rooms
- Carrier-Meet-Me-Rooms
- Carrier-mix
- Connectivity and dark fiber infrastructure
- Redundant cabling infrastructure
- Pre-Cabling
- High-performance internet access
- Inter data center connectivity between our data centers
- Multi Service Interconnection Platform

Additional services

- Client implementation
- Installation services
- 24/7 Remote Hands services
- Facility services
- Additional security services



Certifications

- ISO 9001
- ISO 27001 IT-GS (BSI)
- ISO 50001
- ISO 50600 (building A)
- PCI DSS
- ISAE 3402 Type II

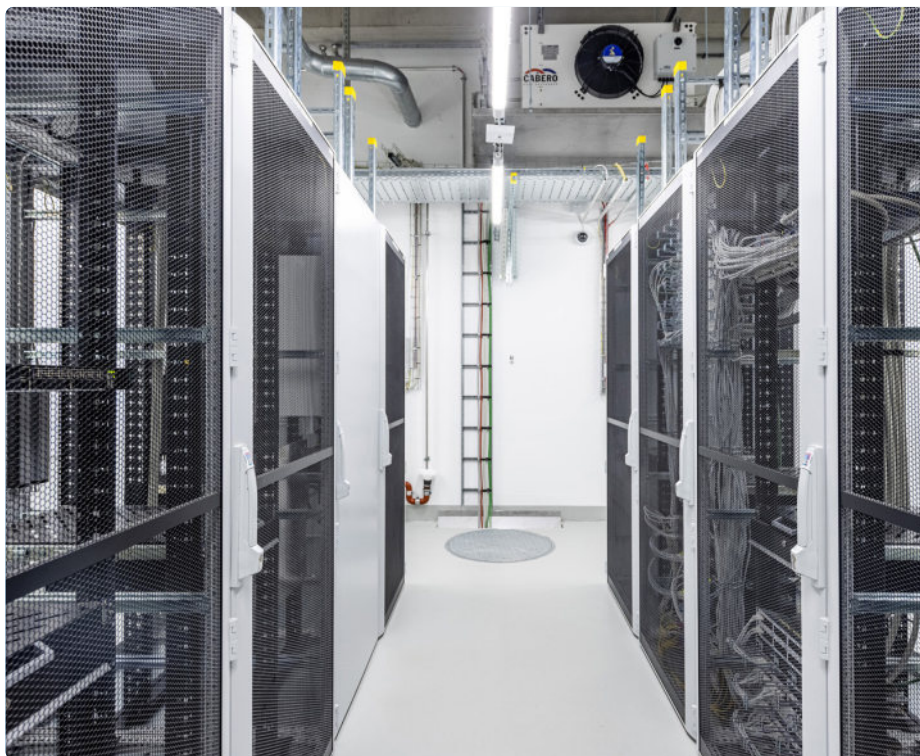
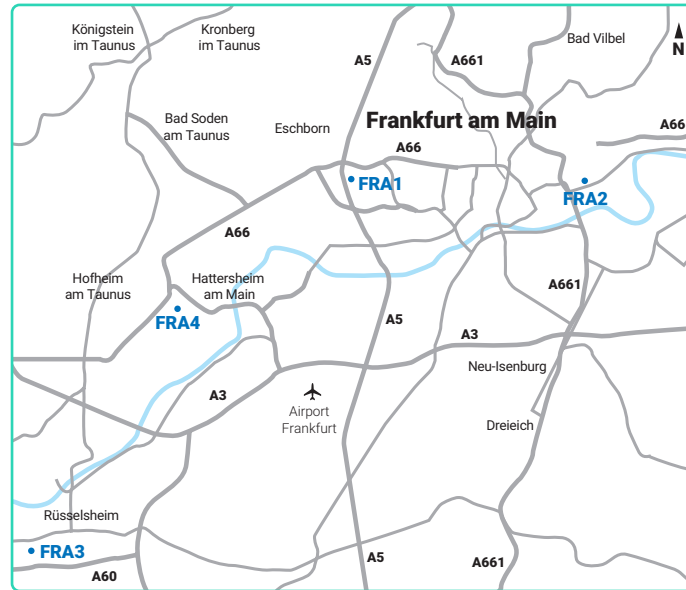
Global data center network

- Part of the NTT family
- Connectivity options to our global network

Service level agreement

- 99.999% power uptime availability
- Climate control conditions in line with ASHRAE guidelines
- Connectivity availability

Locations



Address and contact

Frankfurt 4 Data Center

NTT Global Data Centers EMEA GmbH
Voltastraße 15
65795 Hattersheim am Main
Germany

T: +49 69 7801-2190

E: dc.emea.sales@global.ntt