



EMEA

# London 1 Data Center

London is Europe's **largest data center market** and the heart of the finance industry. We operate a total of **six data centers** in the London area, giving access to a vibrant community of **cloud providers, carriers, partners** and **start-ups**.

## Data center space

- 12,800 m<sup>2</sup> of IT space
- Ancillary spaces on-site

## Power

- On-site substation delivering 80 MVA of power
- IT load 32 MW
- Average power density: 2.5 kW/m<sup>2</sup>
- Power supply on 132 kV level from two grid connections
- Own substation with two 132/11 kV transformers 2N
- Two separate UPS systems (A- and Bsupply) with N+1 redundancy
- Emergency power system with diesel generators N+1

## Cooling

- Redundant water-cooled system supported by free-cooling (N+1)
- Compressorless cooling system, designed for superior energy efficiency and performance
- Cold air flooded room cooling design with suite cooling units (SCUs)
- Hot aisle containment

## Fire protection

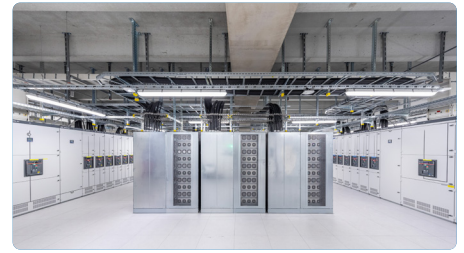
- Smoke detection early warning system (VESDA)
- Water mist fire suppression system
- Fire protection walls to a minimum of 60 minutes separation
- Monitoring with automatic digital fire alarm system

## Security

- 24/7 Security Operations Center and Service Control Center
- Palisade fencing
- CCTV
- Ram-raid bollard protection to BS PAS 68:2013
- Card swipe entry/exit to all doors
- Preventive risk assessment

## Connectivity

- Carrier- and cloud-neutral
- Carrier mix
- Connectivity and dark fiber infrastructure
- Carrier-Meet-Me-Rooms
- Redundant cabling infrastructure
- Pre-Cabling
- High-performance internet access
- Inter data center connectivity between our data centers
- Multi Service Interconnection Platform



## Additional services

- Client implementation
- Installation services
- 24/7 Remote Hands services
- Facility services
- Audit support

## Certifications

- DIN EN ISO 9001
- ISO 27001 (BSI)
- PCI-DSS

## Global data center network

- Part of the NTT family
- Connectivity options to our global network
- Access and use of Technology Experience Labs

## Service level agreement

- 99.999% power uptime availability
- Climate control conditions in line with ASHRAE guidelines
- Connectivity availability

## Address and contact

### London 1 Data Center

NTT Global Data Centers EMEA UK Ltd.  
Yew Tree Avenue Dagenham, RM10 7FN  
United Kingdom

T: +44 20 8016-9118

dc.emea.info@global.ntt

## Technology Experience Lab



**Technology spaces:** Globally available facilities in our productive data centers of NTT that bring together more than 140 technology partners to enable prospects and clients to test and validate, but also innovate on the latest technologies.

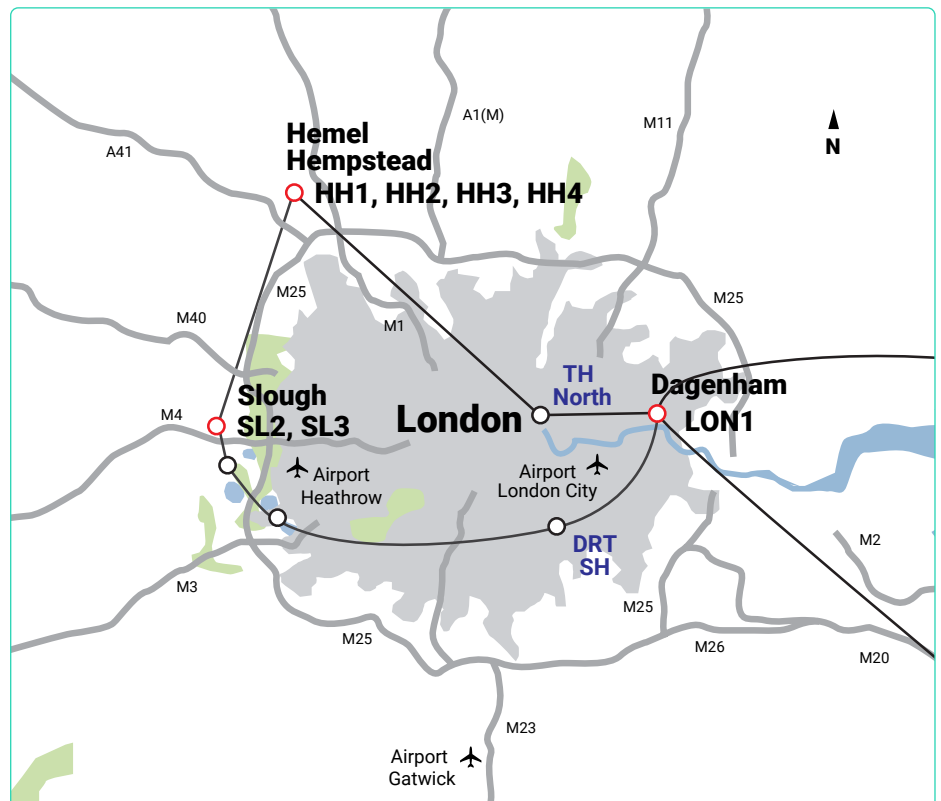


**Industry communities:** Today, information technologies are a key enabler to many organizations. Our industry communities help these organizations to identify relevant technology providers and connect with helpful contacts.



**Start-ups and venture capital:** Many times, start-ups are major drivers when it comes to disrupting various industries. Our start-up unit brings together startups, corporates and venture capitalists to enable and accelerate innovation.

## Locations in London



---

All rights reserved.

The information in this data sheet contains only general descriptions which may not apply for each individual case or may change as products and services levels are adapted to new technological development. The required service elements are only binding when explicitly stated in a service contract. Technical specifications may be subject to alterations.



### Get in touch

If you'd like to find out more about our services, speak to your client manager or [visit our website](#)